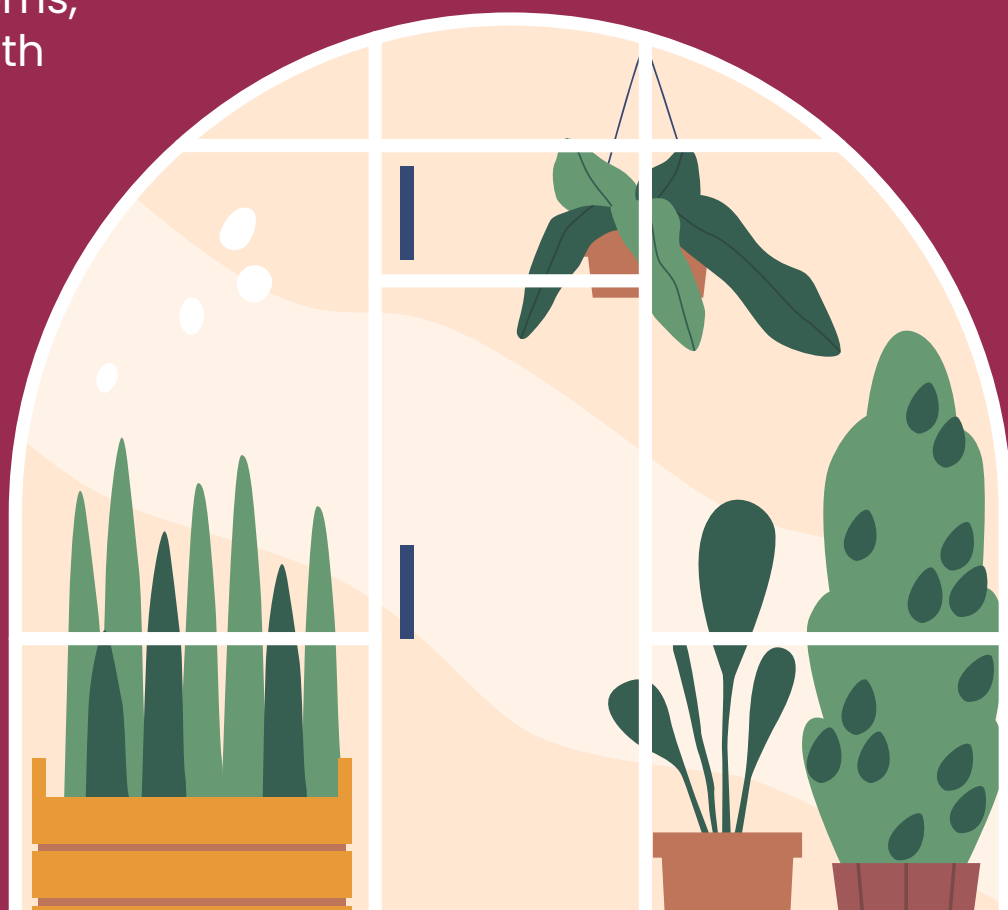




Low-Light Houseplants

These plants are able to thrive in artificial light or where sunlight doesn't directly fall, making them the ideal choice for offices, bathrooms, and other areas with limited sunlight.

BUCHWALTER
GREENHOUSE



6554 Back Orrville Road, Wooster, OH, United States



Low-Light Houseplants

IN A ROOM WITH NO WINDOWS,
LIGHTS WOULD IDEALLY BE ON
ABOUT 8 HOURS A DAY.



1. POTHOS

With a trailing habit, perfect for on the top of a bookshelf or in a hanging basket, Pothos can grow in areas with only fluorescent lighting. It does prefer bright indirect light so too much shade can cause variegated plants to lose their leaf pattern and revert to all-green foliage. On the other hand, pale-looking leaves mean the plant is receiving too much direct sun. Water when the top 2-inch layer of soil is dry.



2. SNAKE PLANT

These are perfect for tall and slim spaces throughout your house. Water once a month and they can survive in basically any light you give them. They will grow faster in brighter light if you have to option but if not, they can tolerate a low light area indoors.





Low-Light Houseplants

IN A ROOM WITH NO WINDOWS,
LIGHTS WOULD IDEALLY BE ON
ABOUT 8 HOURS A DAY.



3. ZZ PLANT

The ZZ plant or Zanzibar gem is drought tolerant, accepts low light, and tolerates neglect. It technically survives even without natural sunlight, thus, you'll find it in many windowless offices. Growing 2-3 feet in width and height, this is a great tall but bushy filler for any floor space or shelf. They are slow growing, so if you get a smaller pot size, give it some time before repotting.



4. AGLAONEMA

Aglaonema, also known as Chinese Evergreen, can tolerate low light conditions but it may grow slower. It can thrive under artificial light, making it an excellent plant for offices or areas with limited natural light. Use fluorescent or LED lights that emit blue and red light to promote healthy growth.

